



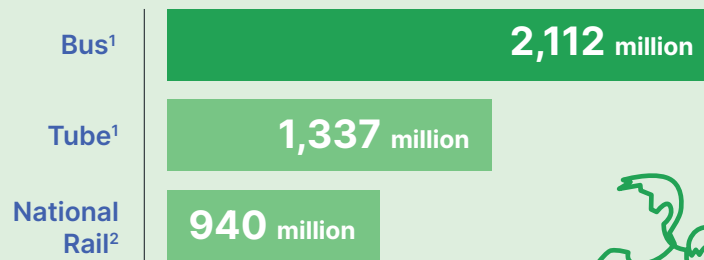
Who uses the bus?

As London's most accessible, affordable and city-wide form of public transport, Londoners use the bus more than the train or Tube, but who relies on it most?

LONDONERS USE THE BUS MORE THAN ANY OTHER TYPE OF PUBLIC TRANSPORT



Passenger numbers on bus, Tube and National Rail in London



1 TfL quarterly performance report, Q4 2019/20 | 2 Regional Rail Usage, ORR 2019-20 | 3 Quant data (survey of 613 Londoners), 2021

BECAUSE THE BUS IS CHEAPER, IT'S REALLY IMPORTANT FOR PEOPLE ON LOWER INCOMES



Who uses the bus at least once a week?

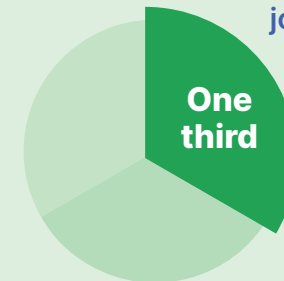
People from households earning less than £20,000 per year⁴



All Londoners



One third of all bus journeys are made by people in households earning less than £20,000⁵

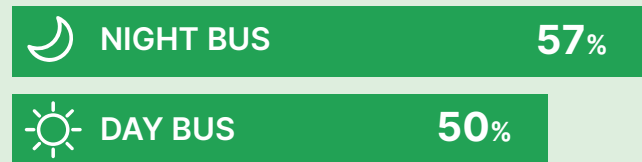


4 Travel in London: Understanding our diverse communities 2019 | 5 TfL bus action plan 2022

#FREE TheBus

People on lower incomes are more likely to use the night bus

Earning less than £20,000 per year⁶



A third of London's workers usually work evenings and nights - 1.6 million people⁷

- from nurses and office workers to technicians, drivers and hospitality staff

LONDON TRAVELWATCH

51% of people travelling on the night bus are using it to travel to work⁸

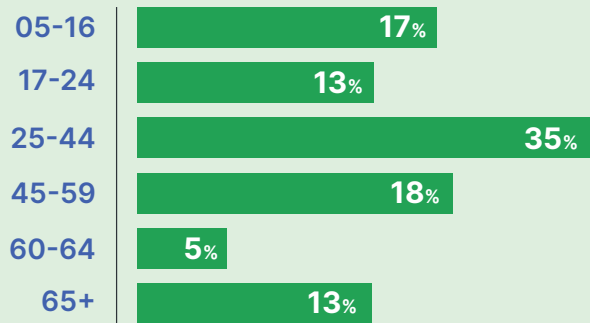


6 Transport for London (2014) Bus user survey. Survey includes non-London residents but excludes under 16s

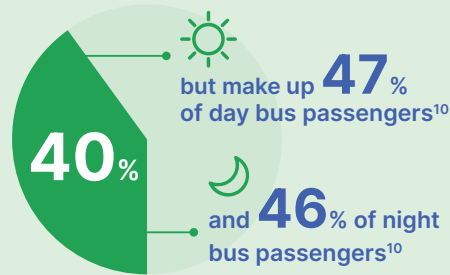
7 London at night - an evidence base for a 24-hour city, Greater London Assembly 2018 | 8 Transport for London (2014) Bus user survey. Survey includes non-London residents but excludes under 16s

LONDON'S BUSES ARE USED BY PEOPLE OF ALL AGES

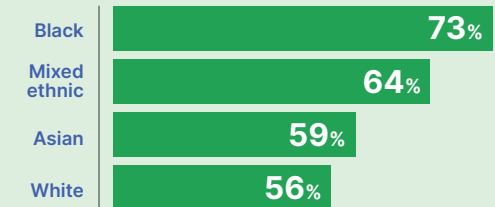
Passengers using the bus at least once a week, by age 2019/20⁹



People of colour make up 40% of London's population¹⁰



Londoners who use the bus at least once a week¹⁰

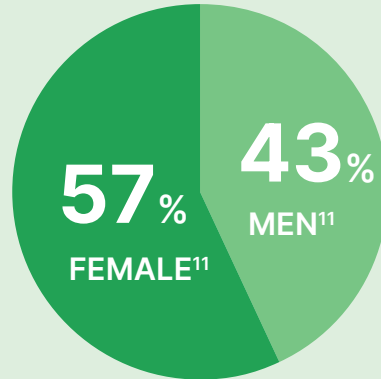
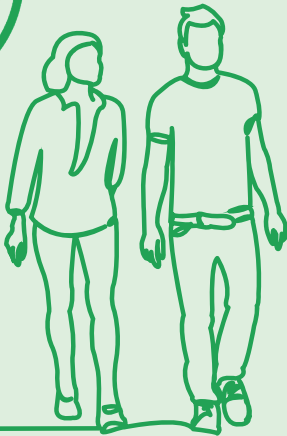


9 London Travel Demand Survey (2019/20). Survey of London residents only including under 16s

10 Travel in London: Understanding our diverse communities 2019

#FREE
TheBus

WOMEN USE THE BUS DURING THE DAY MORE THAN MEN



11 Transport for London (2014) Bus user survey. Survey includes non-London residents but excludes under 16

LONDON
TRAVELWATCH

BUSES ARE THE MOST ACCESSIBLE AND AFFORDABLE FORM OF PUBLIC TRANSPORT

10% of day bus passengers are disabled¹²



12 Transport for London (2014) Bus user survey. Survey includes non-London residents but excludes under 16s

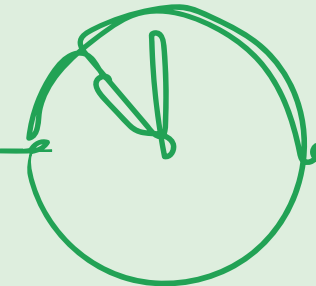
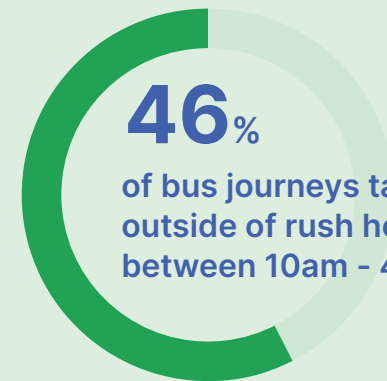
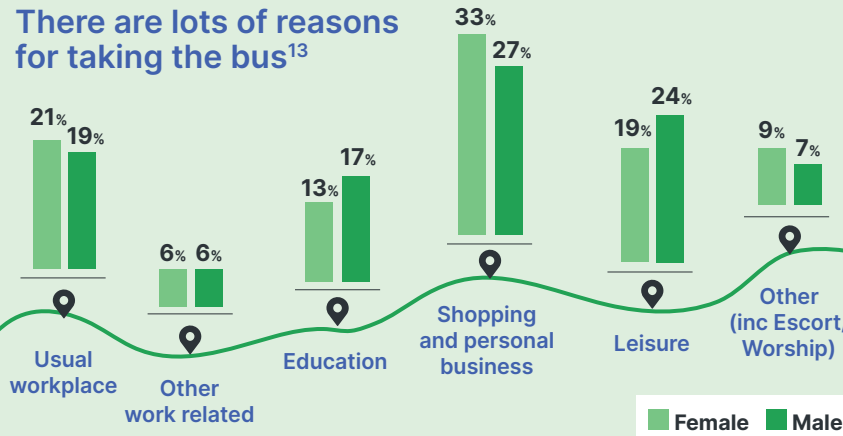


WOMEN, AND PARTICULARLY THOSE WITH CHILDREN, RELY ON THE BUS

It's not just for getting to work



There are lots of reasons for taking the bus¹³



Female Male

13 London Travel Demand Survey (2019/20). Survey of London residents only including under 16s | 14 London Travel Demand Survey (2019/20). Survey of London residents only including under 16s