

c2c Barking update

February 2019

Current station issues

The current issues at the station are well-understood:

- ▶ Barking is a major **interchange** so large numbers of people are changing platforms
- ▶ Peak-time **crowding** builds up at the station, particularly at foot of stairs
- ▶ Forthcoming **Barking Riverside** service will increase number of passengers changing at Barking
- ▶ Only one **lift** to serve 8 platforms, plus the subway is at “wrong” end of platforms for most passengers
- ▶ Current layout of **retail** units is poor, dominates space in the station, and offers varying quality



Station modernisation package

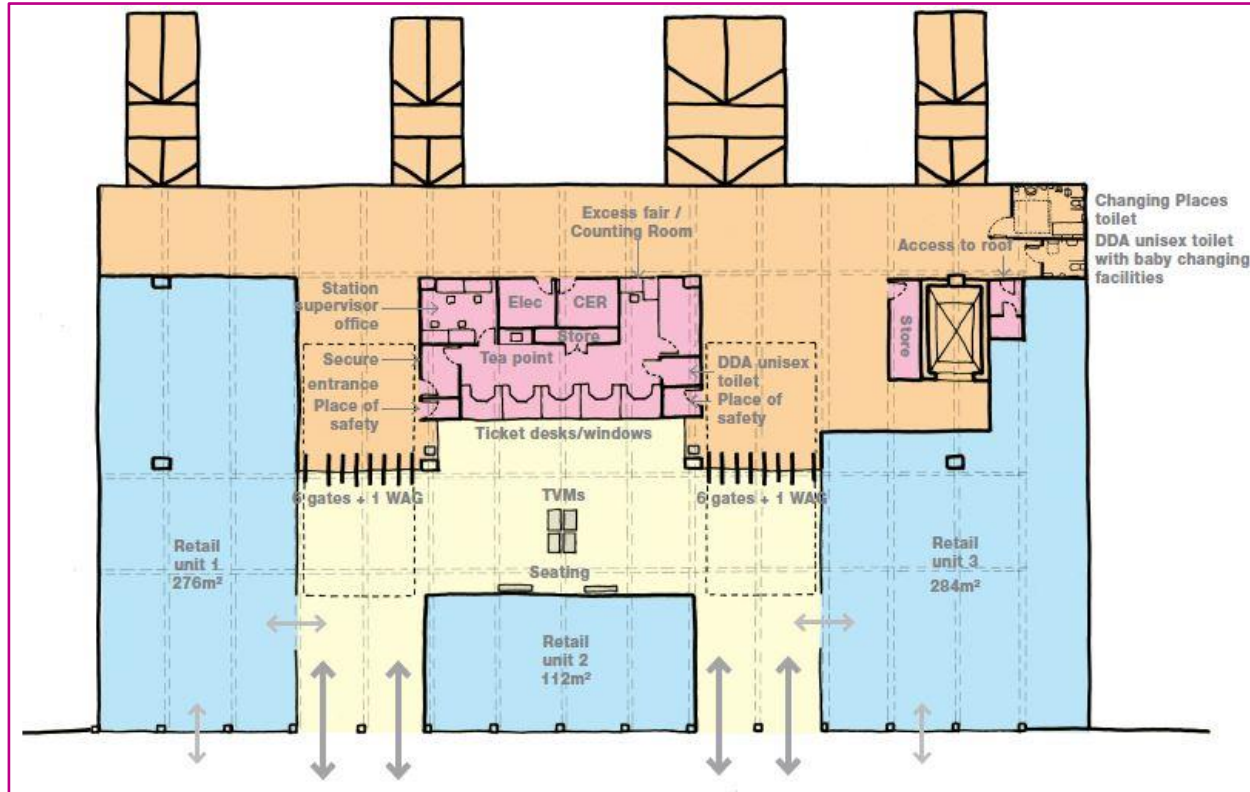
- ▶ Redeveloping Barking is a commitment in c2c's franchise with DfT:
 - Commitment is for £4.3m upgrade of ticket hall
 - Further £200k from Railway Heritage Trust available
- ▶ Current proposals are for a £5.2m redevelopment scheme
 - Includes LB Barking & Dagenham contribution of £900k – however this had been intended to contribute towards lifts to all platforms
- ▶ We have also already invested £500k on roof renewals of main ticket hall and lower ticket office roof

Proposal for current scheme

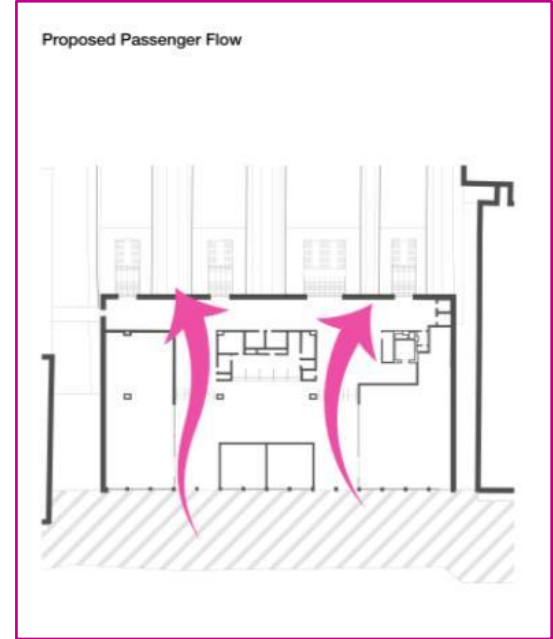
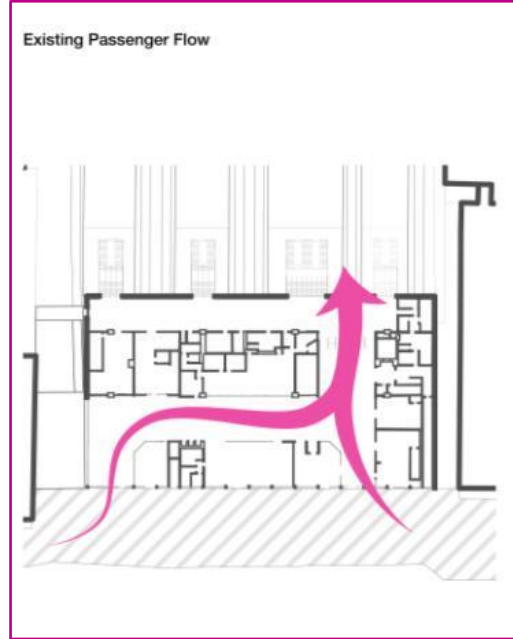
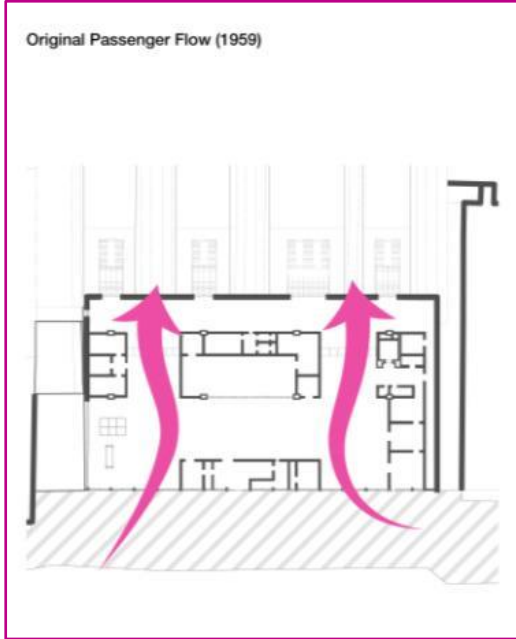
We have submitted a planning application for our scheme, designed by Weston Williamson, delivering:

- ▶ Complete redesign of the station concourse, including:
 - Construction of a second ticket gateline adding eight extra ticket gates – a 100% increase to ease peak-time queues for passengers
 - Doubling the size of the two station entrances to improve passenger flow, deliver better access to Barking Riverside services
 - Increased circulation space for passengers interchanging within the station
- ▶ Restoration of original Grade-II listed architectural features
- ▶ Increased retail space
- ▶ New station toilets
- ▶ Renewal of current lift

Proposed layout (1)



Proposed layout (2)



Proposed interior



Proposed exterior



Retail provision

- ▶ Our original redevelopment proposal included a mezzanine deck:
 - Would provide increased retail options with 6 units
 - Would create potential for other non-rail uses
- ▶ However Pell Frischmann structural engineering report concluded a mezzanine was not possible:
 - Ticket Hall floor is unable to bear the additional weight of the structure
 - Without the mezzanine the number of retail units is three
 - LBBD and c2c want an improvement in quality of retail offer – this is a gateway to the town. We will not replicate what the High Street already offers

Lifts – current scheme

- ▶ Proposed scheme includes renewal of existing lift:
 - Replacement of lift will improve reliability – this was the most faulty lift at any station in London last year
 - We will relocate the gateline so that the lift will be paid side of the gates - users will no longer need a staff escort. Reduces fare evasion and disorder.
- ▶ Original design vision included lifts from concourse to each platform. Pell Frischmann structural report found lifts cannot be installed in current structure:
 - Platforms 2-4, 5-6: Insufficient space between pile caps for new lift
 - Platforms and 7-8: Insufficient space between pile caps for new lifts, plus insufficient clearance for wheelchairs and the platform edge

Lifts – future options

- ▶ Preferred solution is to construct lift shafts further along the platforms, linked by new bridge
- ▶ Costs are significantly beyond existing budget
- ▶ Access for All application submitted last year and costed at £25m
 - Announcement due in April for 5-year funding to 2024
- ▶ In the event AfA is unsuccessful we are exploring other possible funding streams:
 - Housing Infrastructure Fund
 - GLA Land Fund
 - Railway Network Enhancement Plan could provide vehicle for future DfT/ TfL funding



Timescales and next steps

- ▶ Secure planning permission from LBBD
 - Application submitted last month
- ▶ Complete design to Grip 4&5 stages (detailed design) July 2019
- ▶ Subject to planning, construction work could start in November 2019
- ▶ Target full completion date of December 2020