

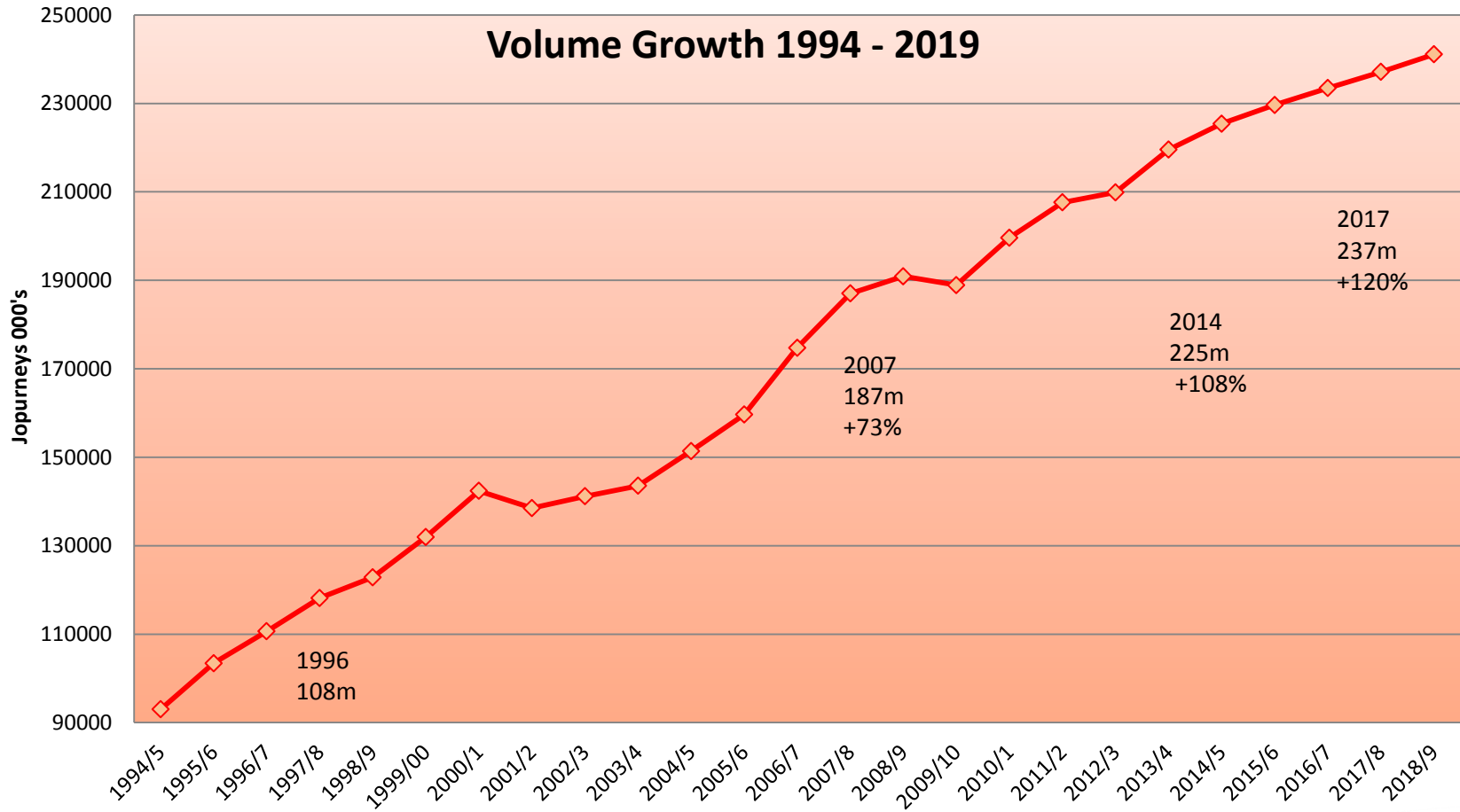
Waterloo - 2017



Chris Loder
Waterloo Business Lead



Passenger Volume Growth 1996-2019





Yockers @yockers · Jan 15

Another uncomfortable, overcrowded, unpleasant service provided by @SW_Trains London => So'ton 14/01/16 17:35





Grumpy Commuter @CommuterGrumpy · Jan 7

@SW_Trains failing to board your overcrowded and woefully inadequate services #SWT20



1



3





**Former Waterloo
International Terminal**

March 2016- July 2017 Install
new track, shorten platforms
and install bridge from
concourse

**August 5-28 inc 2017 –
Closure of Platforms 1-9**

Extend Platforms 1-4 for
10-car suburban services

Install new track and signalling
on approach platforms 1-8

Realign and rebuild country
ends of platforms 5-8

Platforms 1-4 works



5th – 24th August

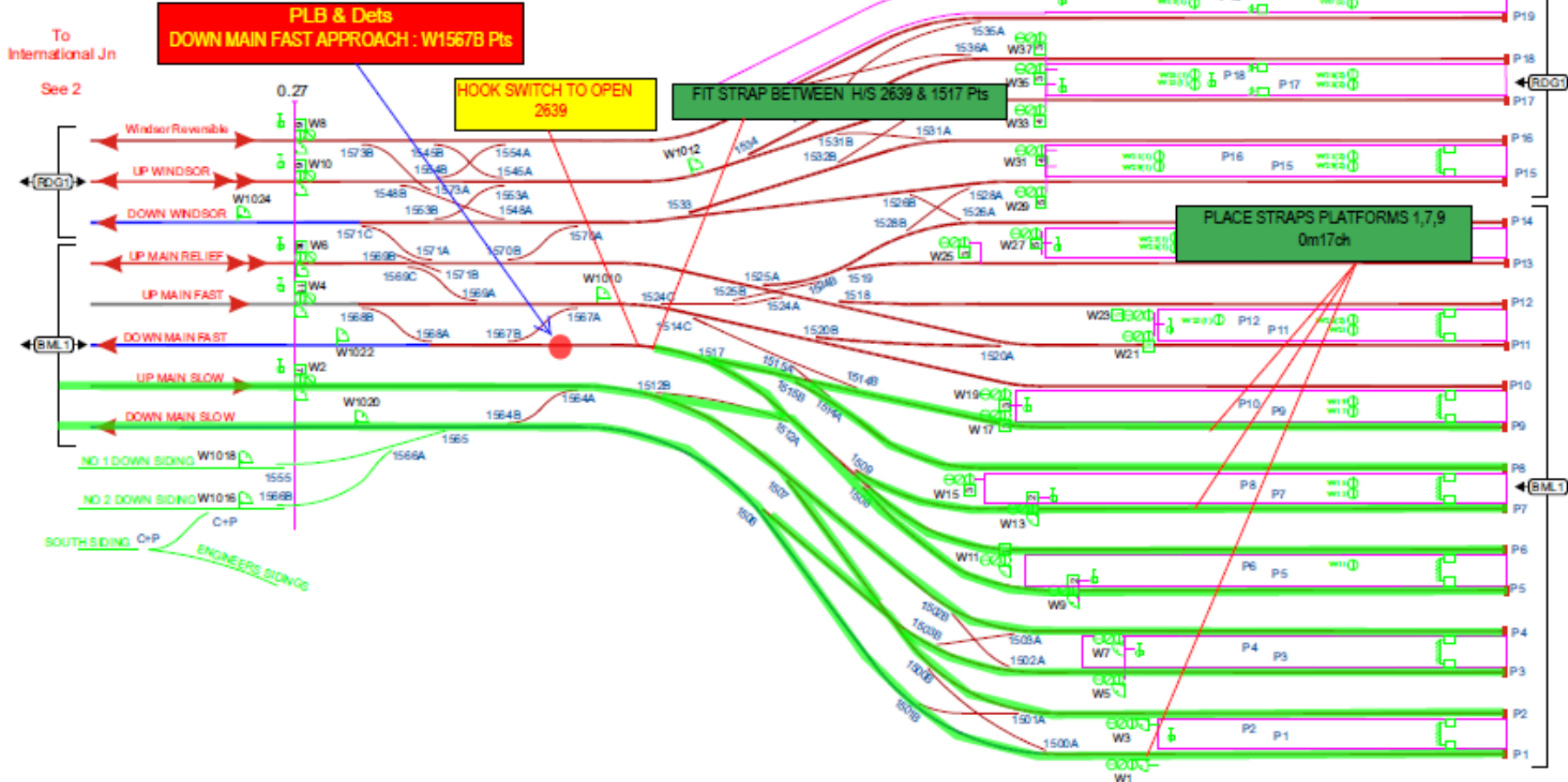
PART 2

Wimbledon Panel 2
Int. 0062522 Ext. 0208 5455522

BML1	EDG1
1528B	1528A
1526A	1526B
1520B	1520A
1517A	1517B

WATERLOO

0m 0ch



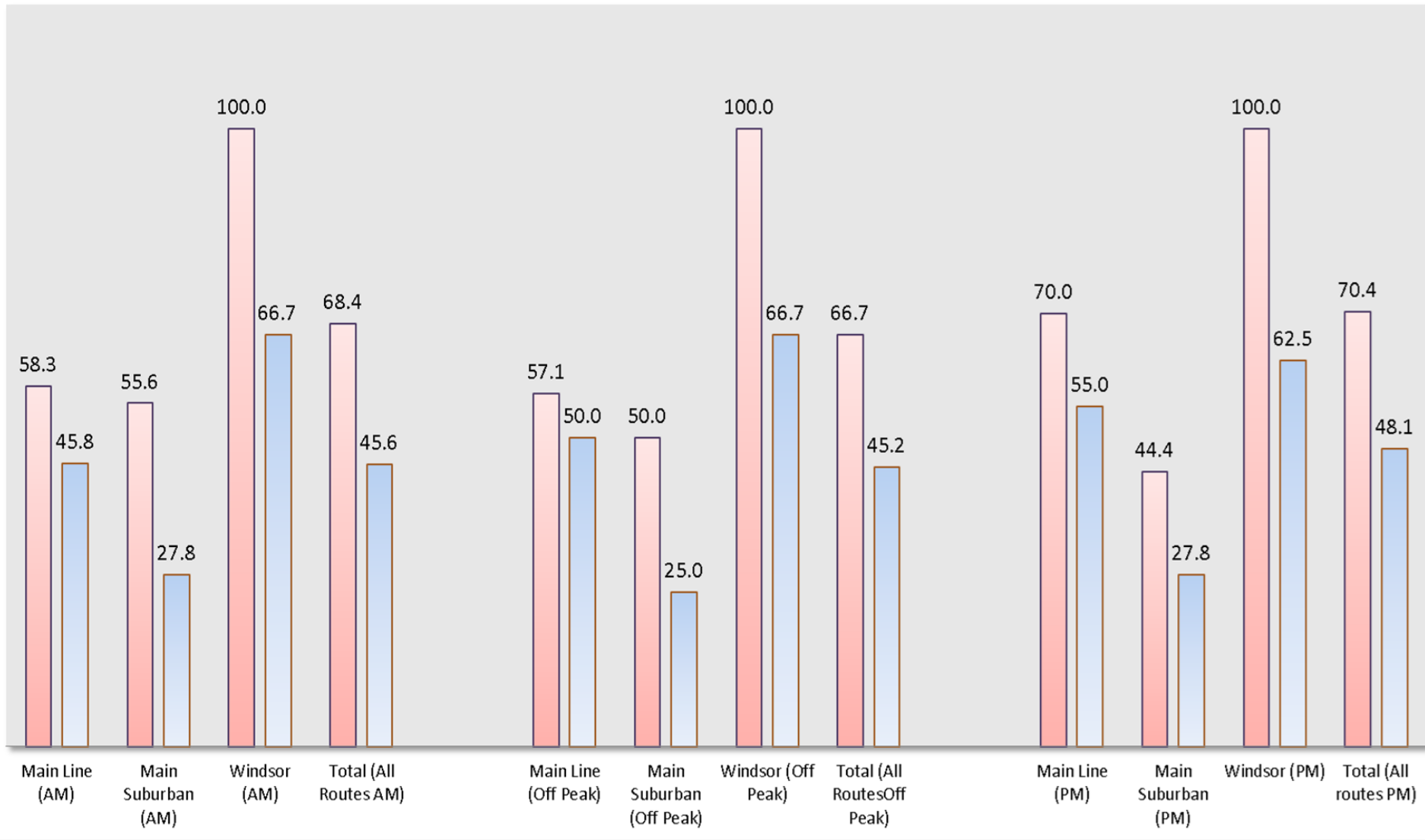
Wimbledon Panel 1
Int. 0062521 Ext. 0208 5455521

Wessex 1

*** This diagram is uncontrolled and therefore can be used as a guide only ***

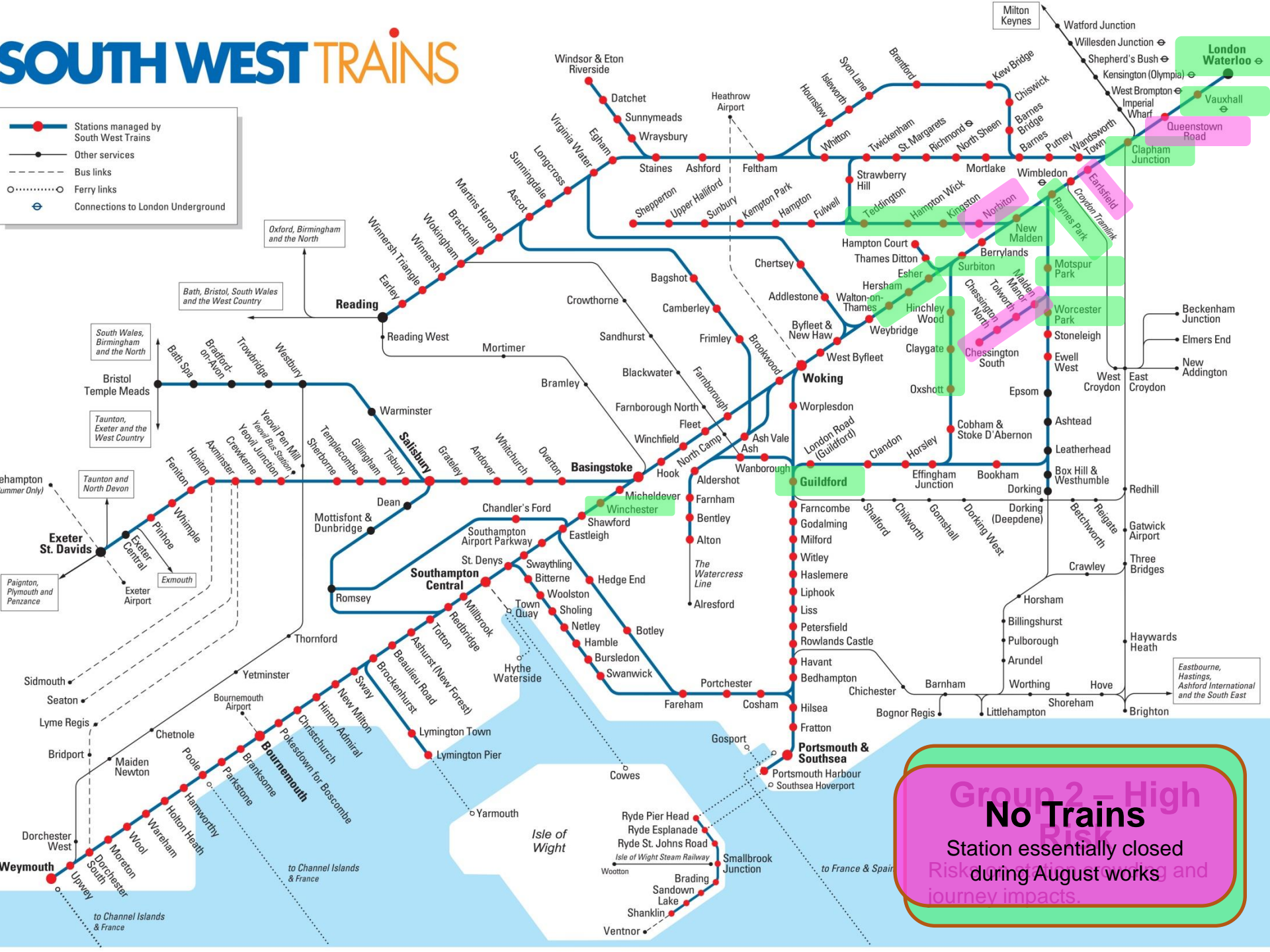
Comparison of train service to normal SX (percentage)

■ SX during the works % of normal service
 ■ Friday 25th August % of normal service



SOUTH WEST TRAINS

- Stations managed by South West Trains
- Other services
- Bus links
- Ferry links
- Connections to London Underground



Group 2 - High Risk
No Trains
 Station essentially closed during August works and journey impacts.

Waterloo East

- **Waterloo East will be closed 26th August to 3rd September**
- **Southeastern plan to operate into Waterloo that week**



A look inside...





Communications – 3rd Wave Launch

Significantly fewer trains to and from Surbiton this August
5 - 28 August 2017

Sorry for the disruption, but you'll see the difference down the line.

Find out more about alternative routes at nationalrail.co.uk/wsw #WSWUpgrade

WATERLOO & SOUTH WEST UPGRADE
Summer 2017 to 2020

SOUTH WEST TRAINS

Funded by UK Government

What is happening

From 5 to 28 August 2017 we'll be extending platforms 1-4. This will allow longer ten-carriage trains to stop at suburban stations for the first time and provide thousands of extra seats every day.

We'll need to close platforms 1-9 throughout this time so that the improvement work can be carried out. This will temporarily reduce the number of trains we can run.

The improvements will mean more seats, longer trains and a bigger, brighter London Waterloo.

Improvements at London Waterloo will mean temporary changes to services
5 to 28 August 2017

Plan ahead now, while we invest to bring you better journeys down the line.

To see how your journey may be affected visit:
southwesttrains.co.uk/wswupgrade
or networkrail.co.uk/wswupgrade

WATERLOO & SOUTH WEST UPGRADE
Summer 2017

SOUTH WEST TRAINS

Funded by UK Government

Artist Impressions

