

2014/15 - 2015/16

Govia Thameslink Railway(formerly Firat Capital Connect)

	PPM% GREAT NORTHERN	PPM% THAMESLINK	RTA% GREAT NORTHERN	RTA TL % THAMESLINK
Period 11(4 Jan-31 Jan 2015)	88.7%	72.0%	60.5%	52.5%
Period 12(1 Feb-28 Feb 2015)	90.5%	82.4%	63.8%	61.0%
Period 13(1 March-31 March 2015)	90.7%	84.6%	67.0%	64.1%
Period 1(1 Apr-2 May 2015)	91.1%	84.6%	64.8%	65.5%
Period 2(3 May to 30 May 2015)	91.6%	85.8%	67.2%	66.0%

Southern

	PPM% METRO	PPM% SUSSEX COAST	RTA % METRO	RTA% SUSSEX COAST
Period 11(4 Jan-31 Jan 2015)	70.6%	78.1%	38.0%	47.5%
Period 12(1 Feb-28 Feb 2015)	75.0%	82.7%	42.6%	52.2%
Period 13(1 March-31 March 2015)	78.2%	82.2%	46.4%	53.6%
Period 1(1 Apr-2 May 2015)	84.0%	84.3%	54.7%	56.7%
Period 2(3 May to 30 May 2015)	87.5%	86.1%	56.6%	56.5%

Southeastern

	PPM% METRO	PPM% MAINLINE HIGHSPEED	RTA % METRO	RTA% MAINLINE HIGHSPEED
Period 11(4 Jan-31 Jan 2015)	92.1%	89.7%	65.1%	65.4%
Period 12(1 Feb-28 Feb 2015)	90.8%	90.3%	66.6%	67.9%
Period 13(1 March-31 March 2015)	93.6%	92.2%	71.2%	71.9%
Period 1(1 Apr-2 May 2015)	89.1%	91.3%	60.2%	68.9%
Period 2(3 May to 30 May 2015)	89.6%	91.6%	62.5%	68.3%

SWT

	PPM% SUBURBAN	PPM% MAINLINE	RTA% SUBURBAN	RTA% MAINLINE
Period 11(4 Jan-31 Jan 2015)	86.7%	85.5%	58.0%	65.6%
Period 12(1 Feb-28 Feb 2015)	91.5%	90.9%	65.3%	69.1%
Period 13(1 March-31 March 2015)	92.3%	90.5%	69.4%	69.0%
Period 1(1 Apr-2 May 2015)	92.3%	91.9%	70.4%	73.6%
Period 2(3 May to 30 May 2015)	92.9%	91.2%	71.1%	71.6%

	PPM National Avg	RTA National Avg
Period 11(4 Jan-31 Jan 2015)	87.9%	63.6%
Period 12(1 Feb-28 Feb 2015)	90.7%	67.0%
Period 13(1 March-31 March 2015)	91.2%	68.8%
Period 1(1 Apr-2 May 2015)	91.2%	68.9%
Period 2(3 May to 30 May 2015)	91.8%	69.3%

	PPM L&SE Avg	RTA L&SE Avg
Period 11(4 Jan-31 Jan 2015)		62.1%
Period 12(1 Feb-28 Feb 2015)		65.3%
Period 13(1 March-31 March 2015)		68.2%
Period 1(1 Apr-2 May 2015)		67.9%
Period 2(3 May to 30 May 2015)		68.0%

2013/14 - 2014/15

	PPM% GREAT NORTHERN	PPM% THAMESLINK	RTA% GREAT NORTHERN	RTA TL % THAMESLINK
	87.2%	78.7%		
	81.8%	82.1%		
	87.6%	86.1%		
	93.2%	86.8%		
	90.5%	82.8%	67.8%	63.1%

	PPM% METRO	PPM% SUSSEX COAST	RTA % METRO	RTA% SUSSEX COAST
	80.4%	79.8%		
	78.9%	76.0%		
	86.4%	86.3%		
	89.5%	86.7%		
	86.9%	87.8%	52.5%	57.8%

	PPM% METRO	PPM% MAINLINE HIGHSPEED	RTA % METRO	RTA% MAINLINE HIGHSPEED
	87.3%	85.4%		
	86.4%	79.1%		
	90.1%	88.3%		
	87.4%	90.6%		
	90.9%	91.1%	60.3%	64.9%

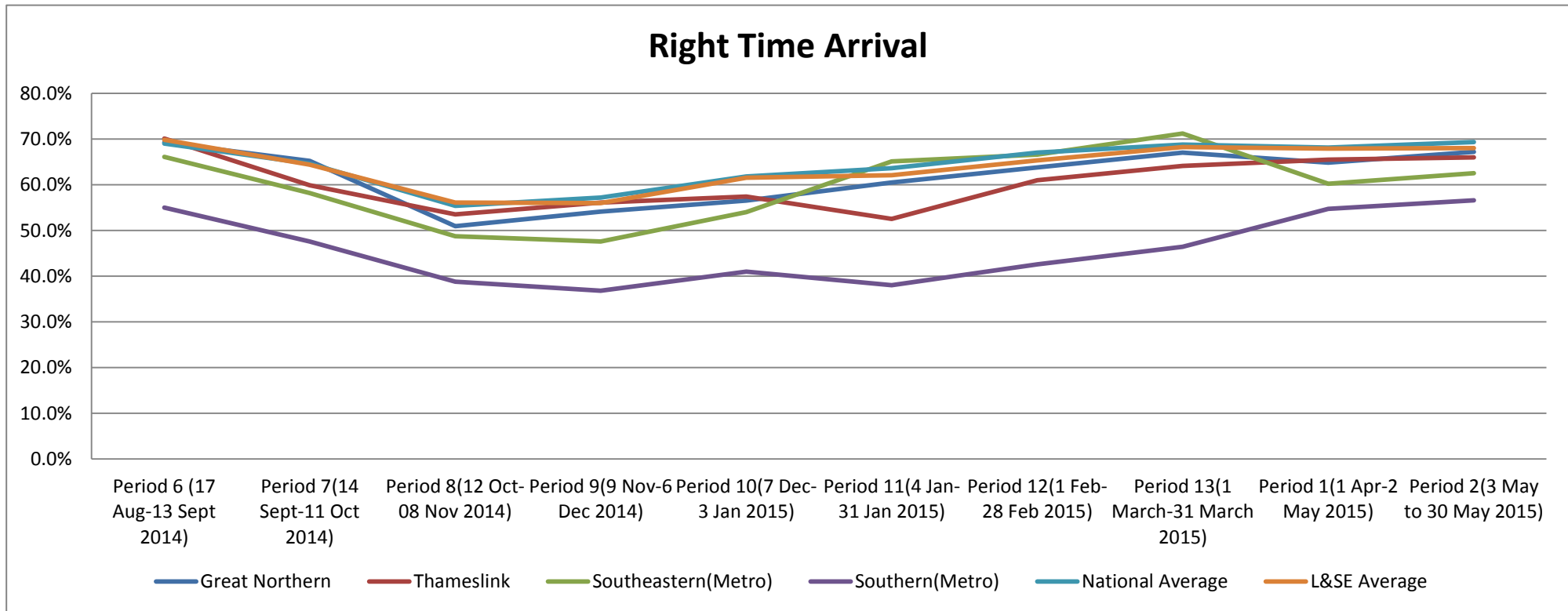
	PPM% SUBURBAN	PPM% MAINLINE	RTA% SUBURBAN	RTA% MAINLINE
	85.6%	82.2%		
	86.0%	79.0%		
	92.2%	89.8%		
	93.2%	92.2%		
	92.5%	90.8%	63.7%	70.1%

	PPM National Avg	RTA National Avg
	89.2%	64.7%
	87.2%	63.1%
	91.5%	68.0%
	92.7%	70.4%
	91.8%	68.8%

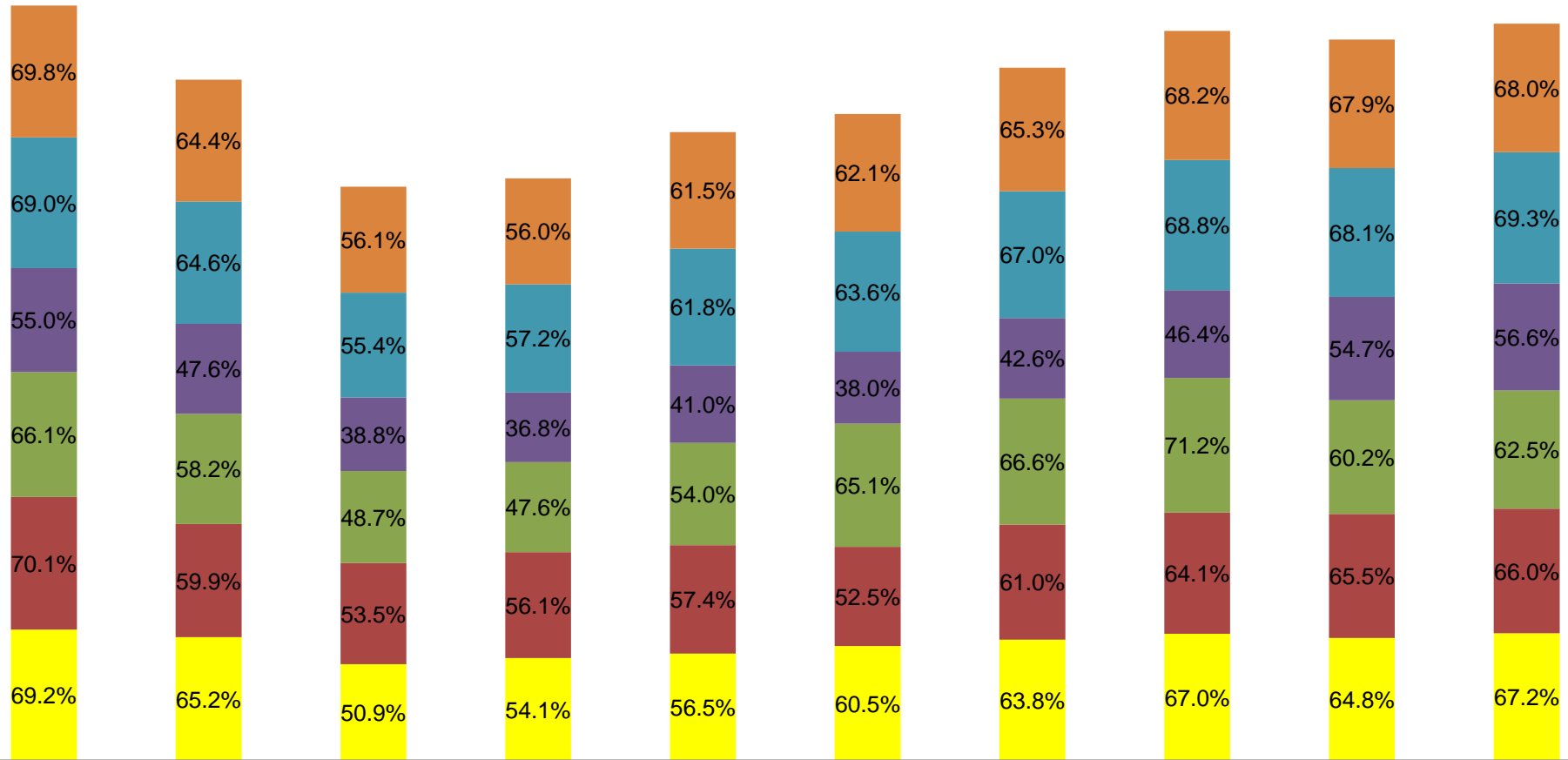
	PPM L&SE Avg	RTA L&SE Avg
	87.1%	62.1%
	85.2%	60.8%
	90.7%	66.9%
	91.7%	68.7%
	91.1%	67.9%

PCO57 16/6/15 Appendix C

	Period 6 (17 Aug-13 Sept 2014)	Period 7(14 Sept-11 Oct 2014)	Period 8(12 Oct-08 Nov 2014)	Period 9(9 Nov-6 Dec 2014)	Period 10(7 Dec-3 Jan 2015)	Period 11(4 Jan-31 Jan 2015)	Period 12(1 Feb-28 Feb 2015)	Period 13(1 March-31 March 2015)	Period 1(1 Apr-2 May 2015)	Period 2(3 May to 30 May 2015)
Great Northern	69.2%	65.2%	50.9%	54.1%	56.5%	60.5%	63.8%	67.0%	64.8%	67.2%
Thameslink	70.1%	59.9%	53.5%	56.1%	57.4%	52.5%	61.0%	64.1%	65.5%	66.0%
Southeastern(Metro)	66.1%	58.2%	48.7%	47.6%	54.0%	65.1%	66.6%	71.2%	60.2%	62.5%
Southern(Metro)	55.0%	47.6%	38.8%	36.8%	41.0%	38.0%	42.6%	46.4%	54.7%	56.6%
National Average	69.0%	64.6%	55.4%	57.2%	61.8%	63.6%	67.0%	68.8%	68.1%	69.3%
L&SE Average	69.8%	64.4%	56.1%	56.0%	61.5%	62.1%	65.3%	68.2%	67.9%	68.0%



L&SE Sub group Right Time Arrival figures



Period 6 (17 Aug-13 Sept 2014)
 Period 7 (14 Sept-11 Oct 2014)
 Period 8 (12 Oct-08 Nov 2014)
 Period 9 (9 Nov-6 Dec 2014)
 Period 10 (7 Dec-3 Jan 2015)
 Period 11 (4 Jan-31 Jan 2015)
 Period 12 (1 Feb-28 Feb 2015)
 Period 13 (1 March-31 March 2015)
 Period 1 (1 Apr-2 May 2015)
 Period 2 (3 May to 30 May 2015)

■ Great Northern
■ Thameslink
■ Southeastern(Metro)
■ Southern(Metro)
■ National Average
■ L&SE Average