

Time : 10.15
Meeting room 4, City Hall,
London, SE1
Contact : 020 7505 9000

Agenda

*The public meeting will be preceded by a members' only session from 9.30 until 10.15.
The public meeting will begin at 10.15 hours and will be open to the news media and public unless a resolution to move into private session is passed in respect of specific agenda items.

Members : David Barry, Terry Bennett, Onjali Bodrul, Kevin Davis, Gail Engert, Daniel Francis, Sharon Grant (Chair), Sophia Lambert, Teena Lashmore, David Leibling, Sarah Pond, Andrew Probert, Lorna Reith (Deputy Chair)

- 1 **Chair's introduction and pre-meeting announcements, apologies for absence (10.15)**
- 2 **Declarations of Interest**
All members have been asked to make a standing declaration of interests which can be consulted at the London TravelWatch office or viewed on the internet at: <http://www.londontravelwatch.org.uk/document/110/2859>. If any item on this agenda requires a specific declaration to be made, members are requested to do so.
- 3 **Chair's activities and report from Passenger Focus Board (oral reports) (10.20)**
- 4 **Minutes (10.25)**
 - a) To approve the minutes of the Board meeting held on 30 June 2009.
 - b) To note the minutes of the Executive Group meetings held on 18 June 2009 and 16 July 2009.
- 5 **Matters arising (LTW319) (10.30)**
To note a report on matters arising from previous meetings.
- 6 **Actions taken (LTW320) (10.35)**
To note a report on actions taken by members and/or officers since the last meeting.
- 7 **Consultation on extension of Passenger Focus role to cover bus, coach and tram passengers (LTW321) (10.40)**
To consider a paper on London TravelWatch's response to this consultation.
- 8 **Motorcycles in bus lanes interim results (10.50)**
To consider a presentation from Josh Martin, Consultation and Communication Manager, Transport for London, on the interim results of the trial allowing motorcycles in bus lanes.
- 9 **London's transport in a recession (LTW322) (11.20)**
To receive an updated report from the Director, Research and Development, on the implications of the recession on transport consumers in London.
- 10 **Recent London TravelWatch research (12.20)**
To receive for consideration the following :
 - South London Line study (LTW323) <http://www.londontravelwatch.org.uk/document/3864/get>
 - Minimising disruption on the Piccadilly Line (LTW324)
- 11 **London TravelWatch business plan (12.40)**

To agree the business plan for 2010-2013

13.00 – 13.55 break for lunch at City Hall (London TravelWatch members and staff only).

12 London Bridge / Thameslink (14.00)

To receive a brief on works at London Bridge and on Thameslink and its associated costs. With Martin Jurkowski, Programme Director (London Bridge), Network Rail, and Jim Morgan, Managing Director, First Capital Connect.

13 Any other business (15.00)

To consider any other relevant business of which due notice has been given. The Chair will not accept late items unless they are genuinely of an emergency nature.

14 Resolution to move into confidential session (15.15)

To resolve, under section 15(2)(b) of schedule 18 of the Greater London Authority Act 1999, that by reason of the confidential nature of the item(s) to be discussed, it is desirable in the public interest that the public should be excluded for the remainder of the meeting.

15 Confidential minutes (15.20)

To approve confidential minutes of the Board meeting held on 30 June 2009.

16 Meeting review (15.25)

To review the meeting and any financial, reputational or other risks posed therein.

Note of London TravelWatch Reports for information

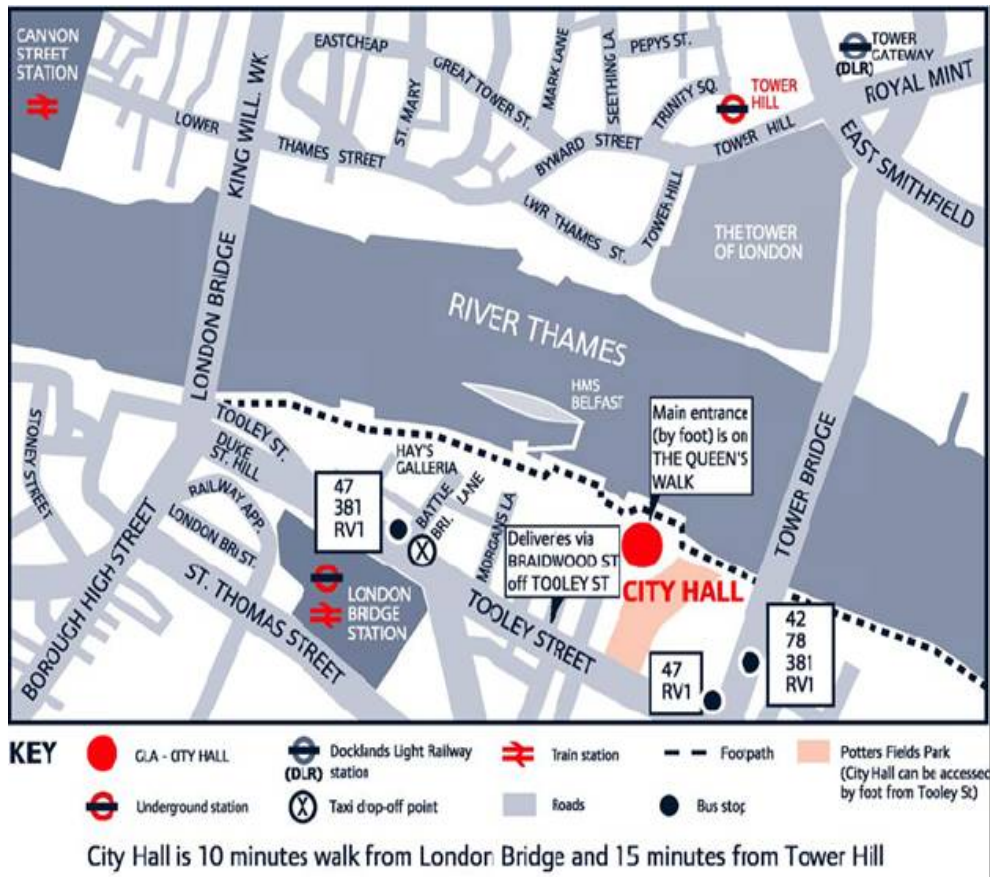
The following reports for information may be found in the London TravelWatch website, using the LTW number as reference. Printed copies are available on request.

- a) LTW325 Minutes of Office of Rail Regulators Railway Industry Advisory Committee
- b) LTW326 Note of external meeting with Southeastern on platform gating at Lewisham

Notes on the Agenda

- i Access to meeting rooms is step-free, and a location map is appended.
- ii Members are reminded that the feed from microphones in City Hall meeting rooms goes straight to the media (including BBC news), is broadcast around City Hall, and streamed live onto the web. The microphones are very sensitive and will pick up side conversations and any movement noise.
- iii The Chair will make every effort to keep to the timings shown for items on this agenda, but there may be occasions when it is necessary to alter them at short notice.
- iv Tea and Coffee will be available for members from 9.30.
- v Lunch for members will taken at 12.45; it is anticipated that the public meeting will conclude by 14.15.
- vi Please note the City Hall Emergency alarm and evacuation procedure :
If the alarm is sounded, you will hear either :
 a woman's voice: "**There is an incident, stand by to evacuate the building**"
or
 a man's voice: "**Evacuate the building immediately**"
On hearing the "**Evacuate the building immediately**" instruction, please:
 - **Leave** by the nearest available exit
 - **Assemble** in the centre of the Potters Field Park (between City Hall and Tower Bridge)
 - **Follow** any instruction given by City Hall Security OfficersYou should not stop to collect personal belongings, use the lifts or re-enter the building.
- vii The next meeting of the Board will be held on 10 November 2009 at our offices at 6 Middle Street, EC1A 7JA.
- viii Contact for queries regarding this meeting : Committee Services team on 020 7505 9000 or email committeeservices@londontravelwatch.org.uk

Location of and directions to City Hall



- Rail :
 - London Bridge (Jubilee and Northern lines and National Rail)
 - Tower Hill (Circle and District lines)
 - Tower Gateway (Docklands Light Railway)
- Buses : 42, 47, 78, 381, RV1
- River services : to London Bridge City Pier, also Tower Millennium Pier and St Katharine's Pier - see <http://www.tfl.gov.uk/modalpages/2648.aspx>

For more detail about getting there by public transport, use Transport for London's http://journeyplanner.tfl.gov.uk/user/XSLT_TRIP_REQUEST2?language=en.

- Bicycle: racks are available on the south side of City Hall by Potters Fields Park.
- Car : If you plan to drive to City Hall, you will need to book one of the four parking bays reserved for Blue Badge holders. To book a Blue Badge parking bay, call City Hall's facilities management on 020 7983 4000. If no bays are available, or you are not a Blue Badge holder, you will not be able to park at City Hall. Parking in streets near City Hall is limited.
- Step free access : For detailed information on step-free access to City Hall by bus, car, taxi and rail or Underground from London Bridge station please visit the following web address : http://www.london.gov.uk/gla/disabled_access.jsp.

Inside City Hall

The main entrance to City Hall is on the north side, by the river (see map). Please allow up to ten minutes upon arrival for security clearance and getting to the Chamber from the main entrance.

Wheelchair access

To the left of the main rotating doors there are wheelchair-accessible automatic doors. To open these, press the yellow button on the outside rail and they will swing outwards. Staff inside should be available to help.

Deaf or hard of hearing visitors

The Chamber is equipped with an infra-red induction loop for the hard of hearing.

Blind or visually impaired visitors

Blind or visually impaired visitors to City Hall can now use a series of tactile maps to help orient themselves while in the building. The moulded plastic maps, which are in a booklet, are to be used in conjunction with an audio guide on CD. The CD explains how the maps work, and how to find where you are on the maps once you are in the building.

The audio guide and tactile maps are available free for loan and can be requested in advance by calling the Greater London Authority's Public Liaison Unit on 020 7983 4100.