



2012 Olympic and Paralympic Games: The Transport Security Challenge

London TravelWatch

6th July 2010

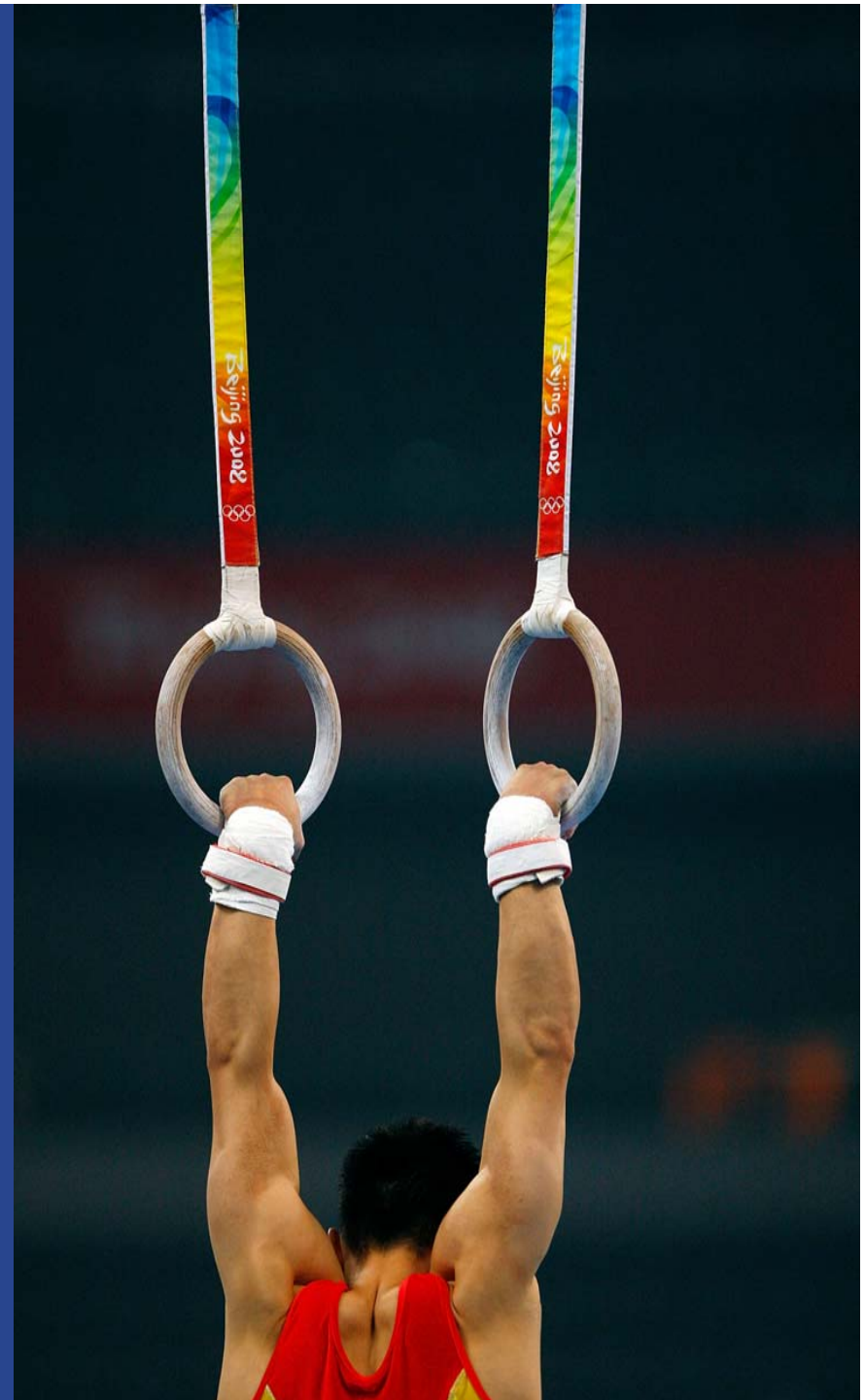
**Stephen Thomas
Assistant Chief Constable**



BRITISH
TRANSPORT
POLICE

Contents

- **The Games**
- **The Transport Challenge**
- **Summer of Celebration**
- **Safety and Security Strategy**
- **Governance and Planning Structure**
- **BTP Progress**
- **BTP Next Steps**
- **Questions**





The Olympic Games is the World's biggest event

- **27 July to 12 August 2012**
- **16 Competition Days**
- **200 Countries**
- **34 Venues**
- **26 Sports**
- **14,700 Athletes**
- **9,800 Team Officials**
- **5,000 Olympic Family**





BRITISH
TRANSPORT
POLICE

The Olympic Games is the World's biggest event

- 27,500 Media
- 100,000 Workforce / Volunteers
- 31,400 Marketing Partners
- 8 (7.7) Million Tickets
- 500,000 Spectators Each Day
- 800,000 Spectators on Busiest Days
- 4 Billion TV Global Audience



The Paralympic Games takes place 18 days later

- **29 August to 9 Sept 2012**
- **11 Competition Days**
- **162 Countries**
- **21 Venues**
- **20 Sports**
- **4,200 Athletes**
- **2,400 Team Officials**
- **1,000 Paralympic Family**





The Paralympic Games takes place 18 days later

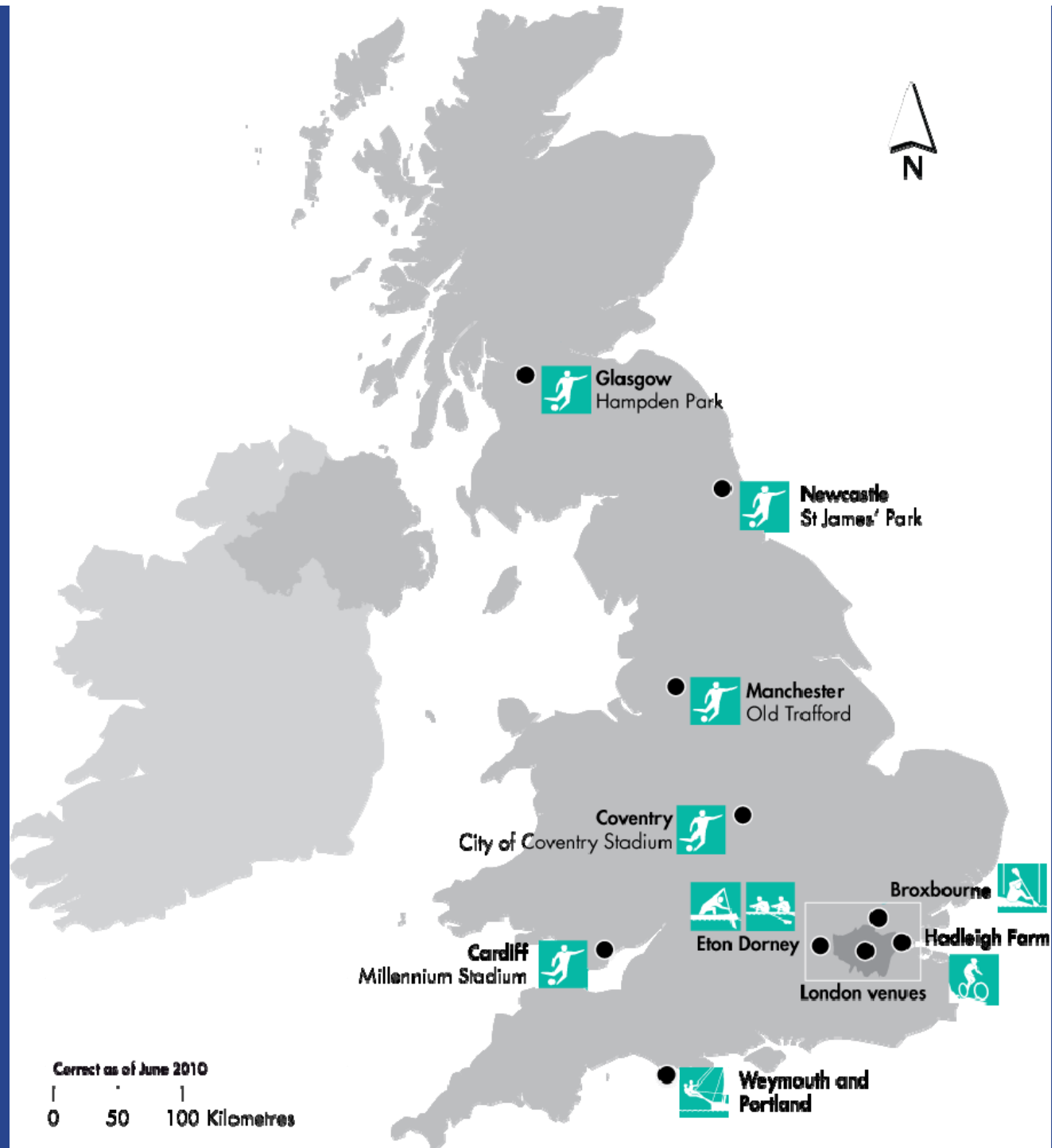
- 10,000 Media
- 4,400 Marketing Partners
- 62,500 Workforce / Volunteers
- 2 (1.5) Million Tickets
- 160,000 Spectators Each Day
- 15-20% Spectators With Specific Access Needs





BRITISH
TRANSPORT
POLICE

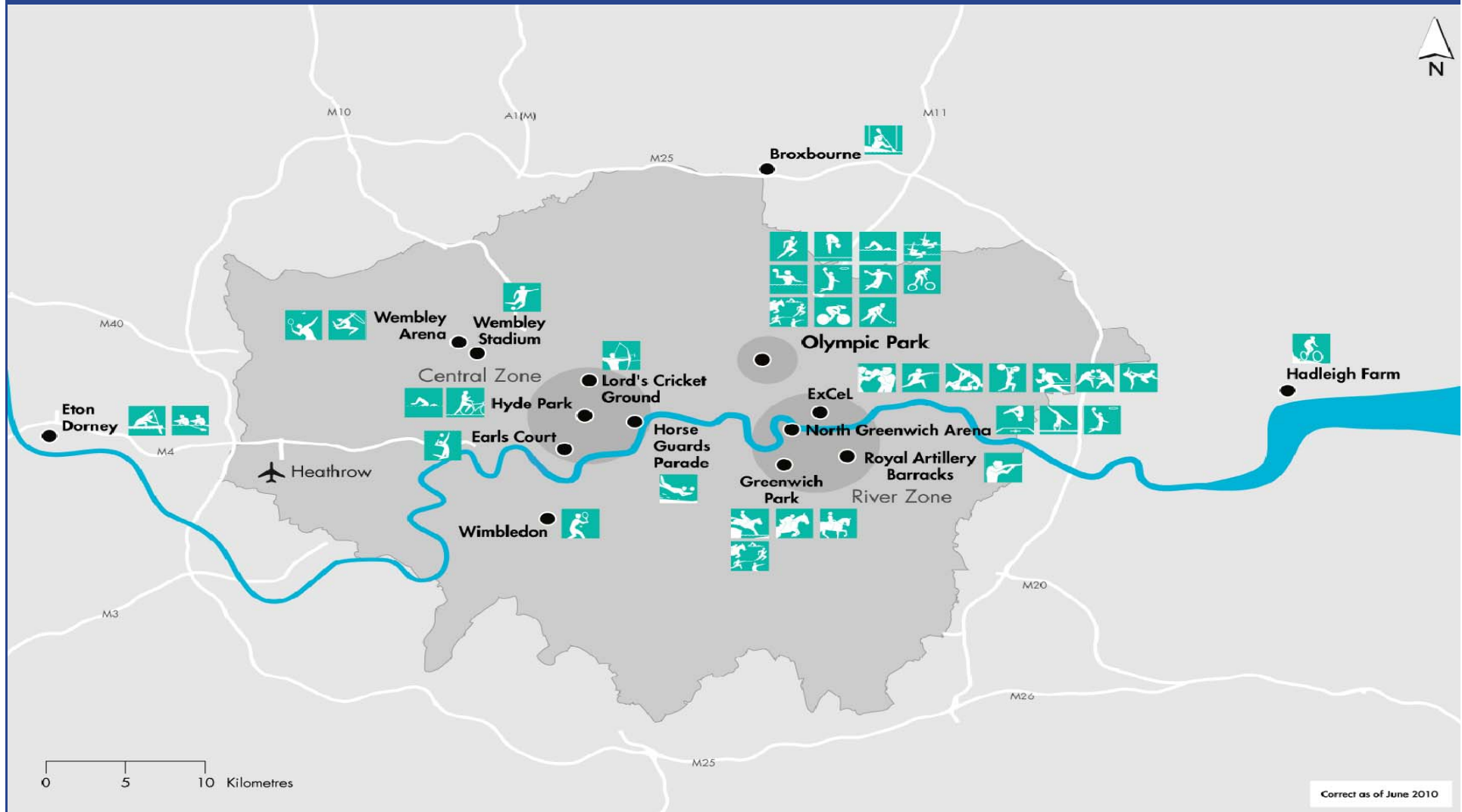
Olympic & Paralympic Games 2012 UK Venues





BRITISH
TRANSPORT
POLICE

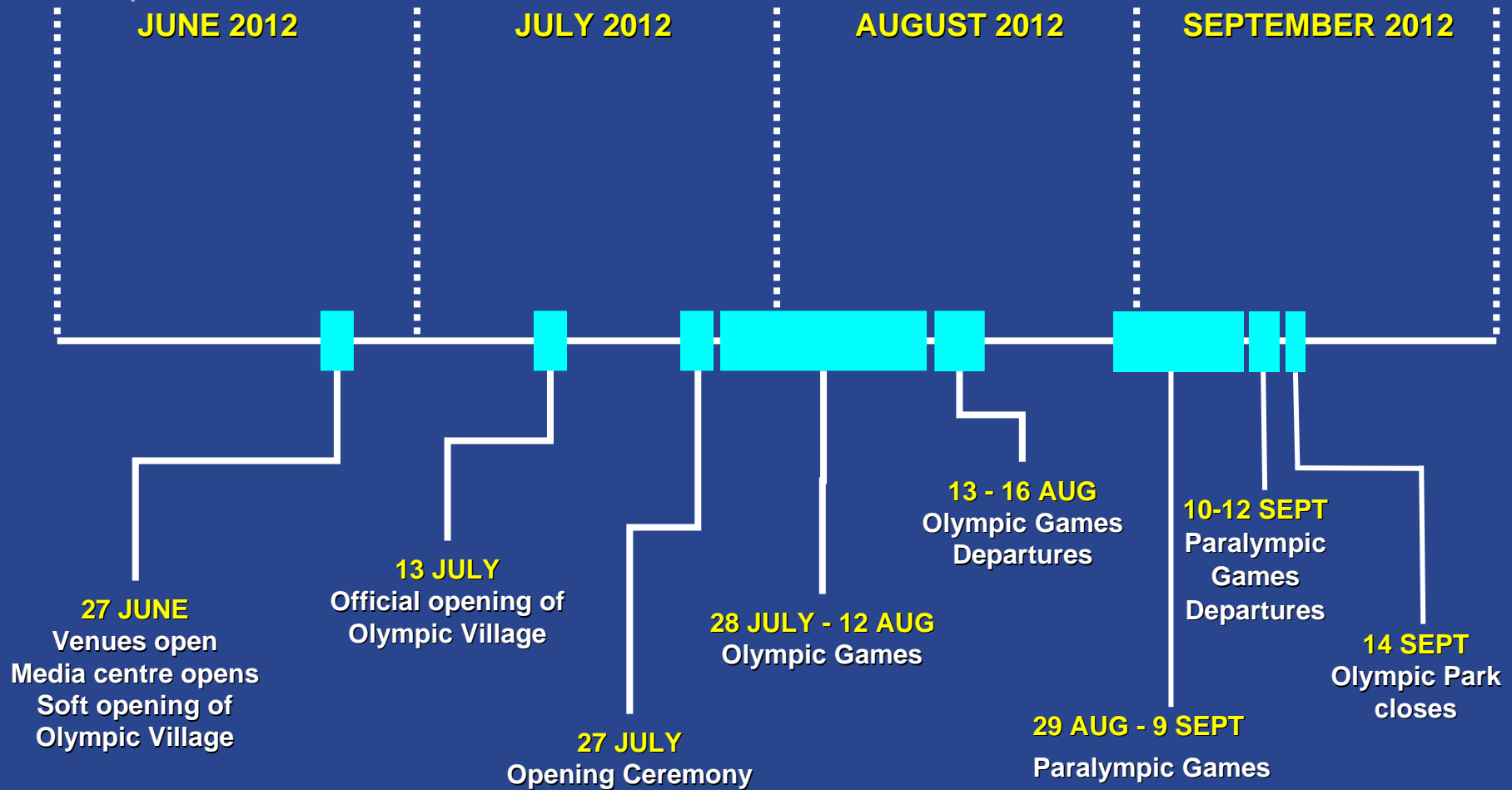
Olympic Games & Paralympic 2012 South East Venues





BRITISH
TRANSPORT
POLICE

Key Dates For Games Transport





Transport Challenge

- 34 Olympic and 21 Paralympic Venues
- UK Wide Operation
- Public Transport Games
- 100% Spectators - Public Transport, Walk, Cycle
- 80% by Rail, Underground and Light Rail
- No Car Parking at Venues – except Disabled
- Multiple modes and interchanges
- Multiple transport mode operators and owners
- 2.3 Million London and South East Tickets?
- 4 Million Rest of UK Tickets?
- 2.7 Million International Tickets?
- 800 BTP Officers and Mutual Aid Officers?



Olympic Park Rail Demands

- Best ever connected Olympic Park
- 10 Rail and Underground Lines
- 3 Gateway stations
- 13.5 Seconds Between Trains
- 240,000 Hourly Capacity
- Javelin - 7 Minutes St Pancras to Olympic Park
- 25,000 Javelin Hourly Capacity
- Park & Rail Ebbsfleet ?
- 275,000 Spectators Each Day to Olympic Park
- 215,000 (78%) Rail and Underground
- 120,000 (58%) Stratford Regional Station
- 95,000 (42%) Stratford International and West Ham



Transport Security Risks

- **Terrorism**
- **Serious Crime**
- **Domestic Extremism**
- **Public Order**
- **(Service Disruption)**



BTP Risks

- **Reputation**
- **Funding**
- **Access to Mutual Aid**
- **Open Access Transport Systems**
- **Balance Security v Olympic 'Look and Feel'**
- **BTP Accommodation at Stratford / Hatfield**
- **Olympic Live Events**



The Summer of Celebration 2012



- Queen's Diamond Jubilee
- Euro 2012
- Wimbledon Tennis
- Live Events
- Games Live Screening
- Domestic Football
- Notting Hill Carnival
- Business as usual



**BRITISH
TRANSPORT
POLICE**

Unique Strategic Challenges

Concurrent mass spectator events	Multiple events over 64 day period	Concentration of Protected persons
Transport System at Capacity	Policing at Capacity	Partners Working at Capacity
International pressures and demands	Zero tolerance on event time delays	Consistent security `look and feel`



Olympic and Paralympic Safety and Security Strategy

Vision:

To host an inspirational, safe and inclusive Olympic and Paralympic Games and leave a sustainable legacy for London and the UK

Aim:

To deliver a safe and secure Games, in keeping with the Olympic culture and spirit





BRITISH
TRANSPORT
POLICE

Olympic Security Directorate Five Workstreams

PROTECT

- *ID Assurance*
- *VIP Protection*
- *Site & Venue Security*
- *CBRNE*
- *Transport Security*

PREPARE

- *Resilience & Consequence Management Planning*
- *Specialist Response (CT)*
- *Critical Olympic Infrastructure*

IDENTIFY & DISRUPT

- *Olympic Intelligence Centre*
- *Covert*
- *Serious & Organised Crime*
- *Volume Crime*
- *CCTV & ANPR*

C2, PLAN & RESOURCE

- *National Demand Profile*
- *Meeting Demand*
- *Training*
- *Operational Logistics Infrastructure*
- *Coordination Room*
- *Operational Control Infrastructure*
- *Command Doctrine*

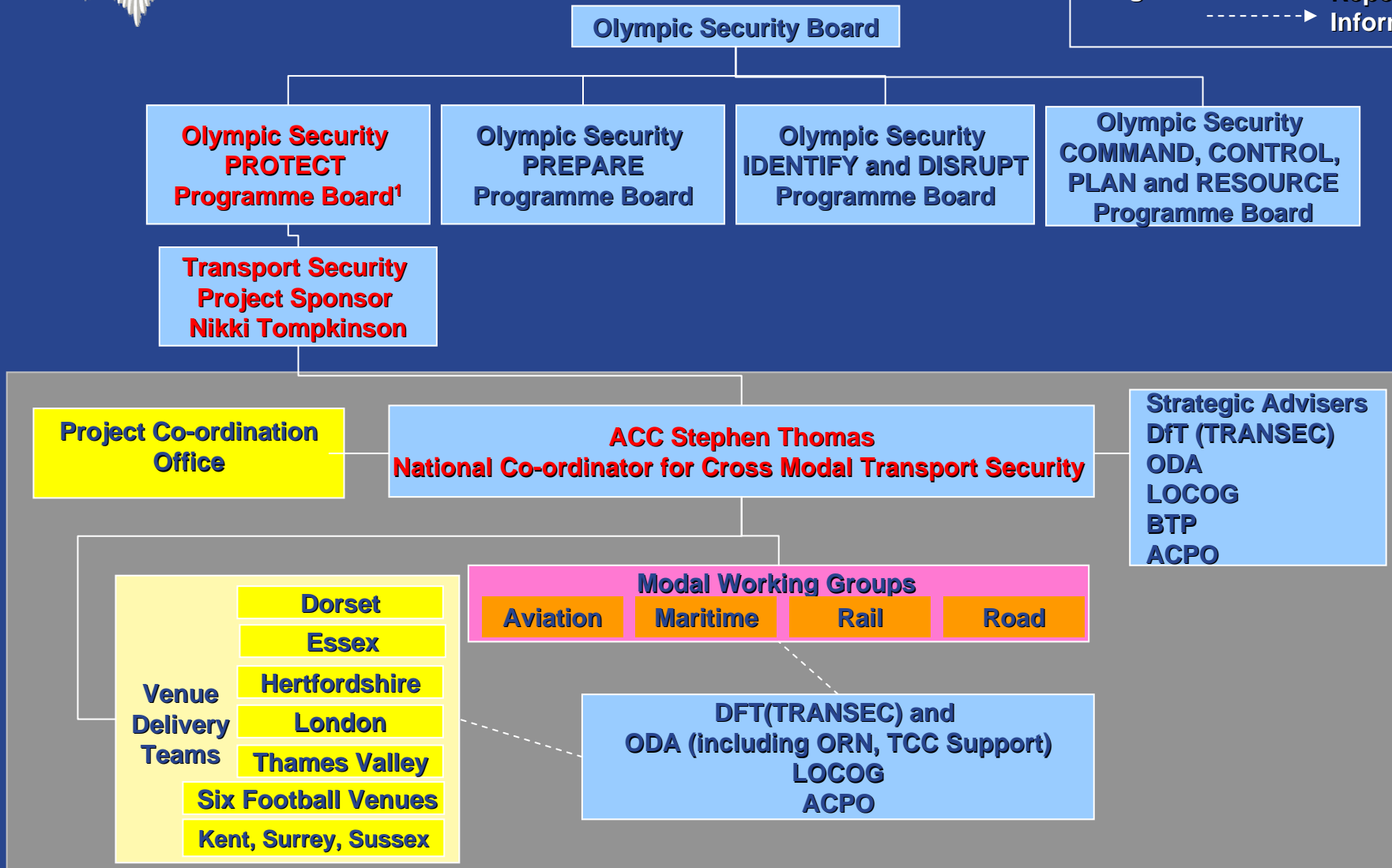
ENGAGE

- *International Relations*
- *Community Relationships & Equalities Management*
- *Volunteers*
- *Prevent*
- *Industry*



The National Coordinator for Cross Modal Transport Security is responsible for delivering the project through Modal Group and Venue Delivery Teams

Legend ———▶ Reporting
 - - - - -▶ Information



Note 1: Protect work stream contains multiple projects including Transport Security



Rail Modal Working Group Members

- **ODA**
- **DfT / TRANSEC**
- **British Transport Police**
- **Kent Police**
- **Network Rail**
- **Association of Train Operators**
- **Rail Freight Operators Association**
- **Transport for London**



Rail Modal Working Group Members

- **London Underground**
- **London Overground**
- **Docklands Light Railway**
- **Eurostar**
- **Eurotunnel**
- **Heathrow Express**
- **Southeastern**
- **South West Trains**
- **Freight Operators**



Transport Security Planning Assumptions

- **BTP Games operations fully funded**
- **SEVERE threat level (attack highly likely)**
- **ODA 'Olympic Transport Plan'**
- **ODA and LOCOG remain responsible for their IOC Family and in venue transport**
- **Operators retain responsibility for safety, resilience and business continuity**
- **Operator security costs met by them in accordance with 'user pays' principle**



Where Are We ? (1)

- **Ministerial agreement to BTP budget**
- **BTP National Cross Modal Role**
- **OSD / DfT Transport Security Project**
- **BTP Olympic Project and Planning Teams**
- **Risk Assessment Process and Register**
- **Additional Resources**
- **Stakeholder Relationships (DfT / OSD / ODA / LOCOG / Industry / Home Office Forces / GLA / Newham)**



Where Are We ? (2)

- **Command Structure**
- **BTP Gold Strategy**
- **BTP Draft Tactical and Operation Plans**
- **Gap Analysis – Mutual Aid**
- **Games Accommodation: Stratford / Hatfield**
- **Business As Usual – with Olympic
Additionality**



What Next ?

- **LOCOG Events Schedule**
- **ODA Rail Service Delivery Plans**
- **Transport Security Modal and Venue Work**
- **Venue Transport Plans**
- **Venue Transport Security Plans**
- **Deliver BTP Olympic Project Work Packages**
- **BTP Operational Policing Plans**
- **Testing and Exercising Programme**

QUESTIONS ?

